

Casa Vista Air Exhaust in “A” unit and “B” unit laundries

NOTE: Only moist laundry air may use this exhaust.

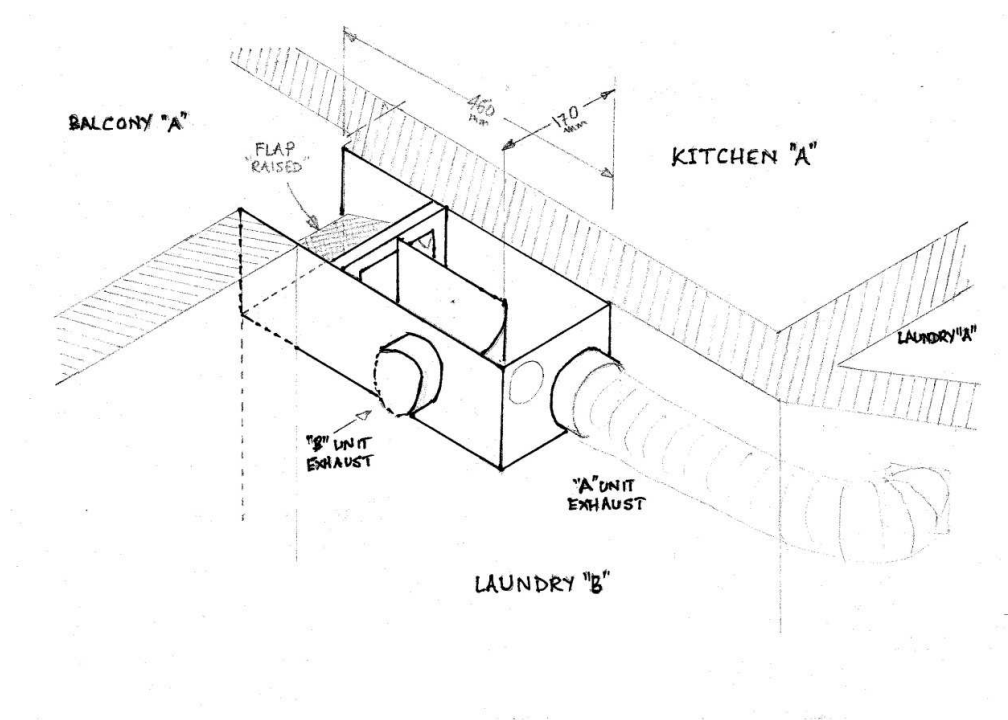
Range hoods and other kitchen exhaust is PROHIBITED from connection

Air exhaust from the “A” laundry is by means of a fan (lot property) and 125mm dia. flexible ducting, passing through the top of the northern wall of the laundry into the “B” unit laundry and connecting to the exhaust plenum chamber.

Air exhaust from the “B” unit enters the side of the plenum chamber. See diagram.

In the plenum chamber the two exhausts are separated until they pass through a flap and through the grille to the “A” unit balcony. The chamber was manufactured by Blendair Pty Ltd, Auburn NSW:

The flap inside the grille must remain in the open position to ensure that each unit can exhaust without “blowback” from one into the other. The grille is 260x210mm with two screw holes 230mm apart.



Exhaust grille on “A” balcony	Grille removed, flap up	“A” and “B” inlets visible and separator



"A" unit flexi duct into "B" laundry



"B" laundry. Plenum chamber on left, "A" exhaust duct. See Note 1 below.



Another view in the "B" laundry showing also the above laundry washing machine drain (top copper pipe) and floor waste (large P trap). The lower copper pipe appears to drain through the wall into the "A" laundry and into the stack. (See below).

Note 1. The upper, smaller, flexible ducting is not seen in all units and appears to connect to the "A" side of the plenum chamber. It may be an unauthorized variation.



This is the view in the "A" laundry of the common wall to the "B" laundry. The original hot water system has been relocated and the 15mm green insulated and copper pipes are the hot and cold water feed to the washing machine (behind the camera)

